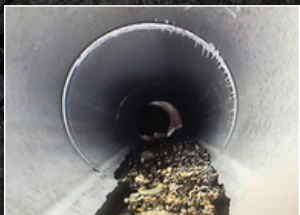


PIPE INSPECTION SERVICES

Q&D Construction's Specialty Services Department offers a range of CCTV-video-aided pipe inspection capabilities to help our clients:

- Manage risks in underground systems;
- Locate and investigate leaks or blockages;
- Identify structural problems;
- Mitigate costly repairs; and,
- Perform regular system maintenance.



Debris accumulating in a 30-inch storm drain pipe



Infiltration and inflow location pinpointed in an 8-inch VCP sewer



Maintaining sewers begins with a clear understanding of collection system conditions.

Rick Fisher
Q&D Video Inspection Team Leader

Q&D uses the latest CCTV equipment and data collection software to swiftly deliver detailed, GIS-compatible, standards-compliant inspection data. Q&D will help you identify areas of potential damage to avoid costly emergency repairs. The Q&D team is skilled in underground utility work and can help develop recommendations for remediation and repairs.

Inspection Capabilities Include:

- Piping from 4" to 72" diameter
- Lateral inspections from mainline to service
- Manholes
- Sanitary sewers
- Storm sewers
- GIS/GPS integration

Other Features and Services:

- Maintenance agreements
- Line cleaning / jetting
- Trenchless pipe repair
- Locating
- Hydro-excavation



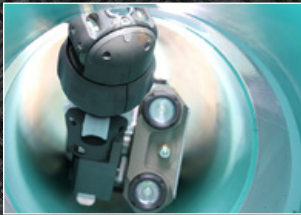
Q&D CONSTRUCTION

est. 1964

Specialty Services

1050 S. 21st Street
Sparks, NV 89431
NVCL: 8197 A&B
CACL: 427988BA

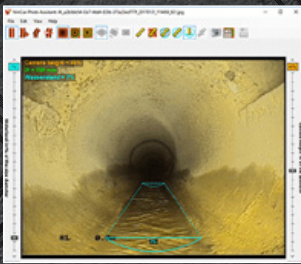
PIPE INSPECTION SERVICES



Q&D has lateral launch capabilities from main line up to 130 feet.



Horizontal drilling can play a major part in line issues. Video inspection helps pinpoint them.



Q&D can digitally measure sags, deformities, lateral connections, cracks, joint separations and more.



Operators are NASSCO-certified. PACP, MACP & LACP

Mobile Rig for On-Site Analysis at Almost Any Location



CALL TODAY!

Video Camera Inspection and CCTV Services For Conduits, Sewers & Drain Pipes

Rick Fisher

Video Operator
(775) 302-6307
rfisher@qdconstruction.com



SPECIALTY SERVICES
Q&D CONSTRUCTION